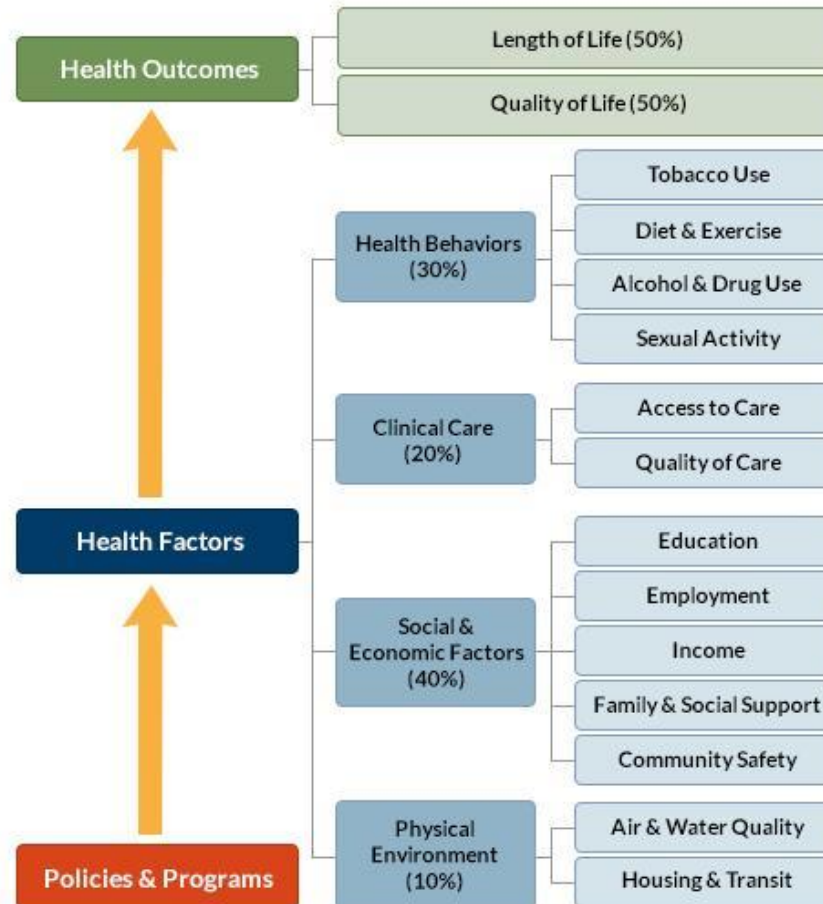


St. Joseph County Health Rankings

2011 - 2018

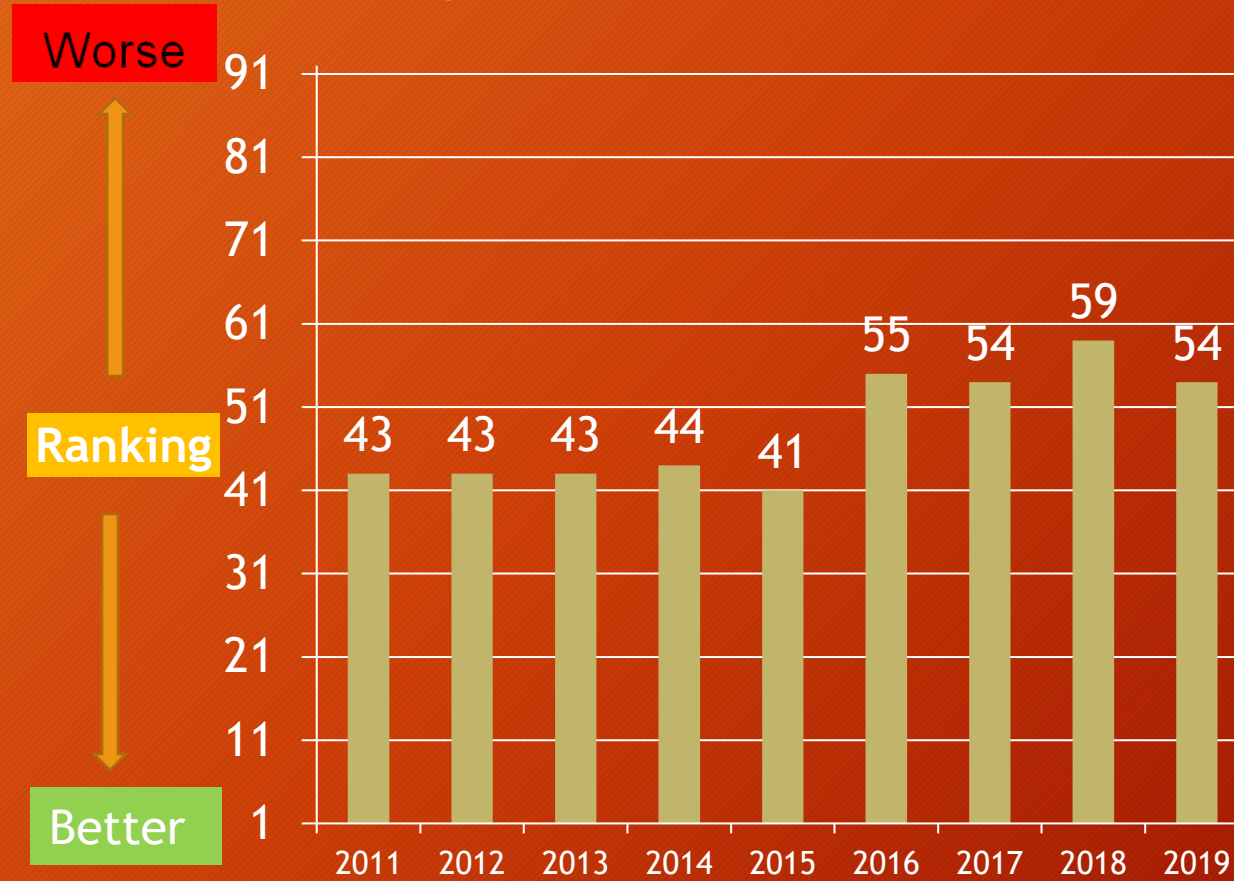
<http://www.countyhealthrankings.org/app/indiana/2017/rankings/stjoseph/county/outcomes/overall/snapshot>

Ranking Model



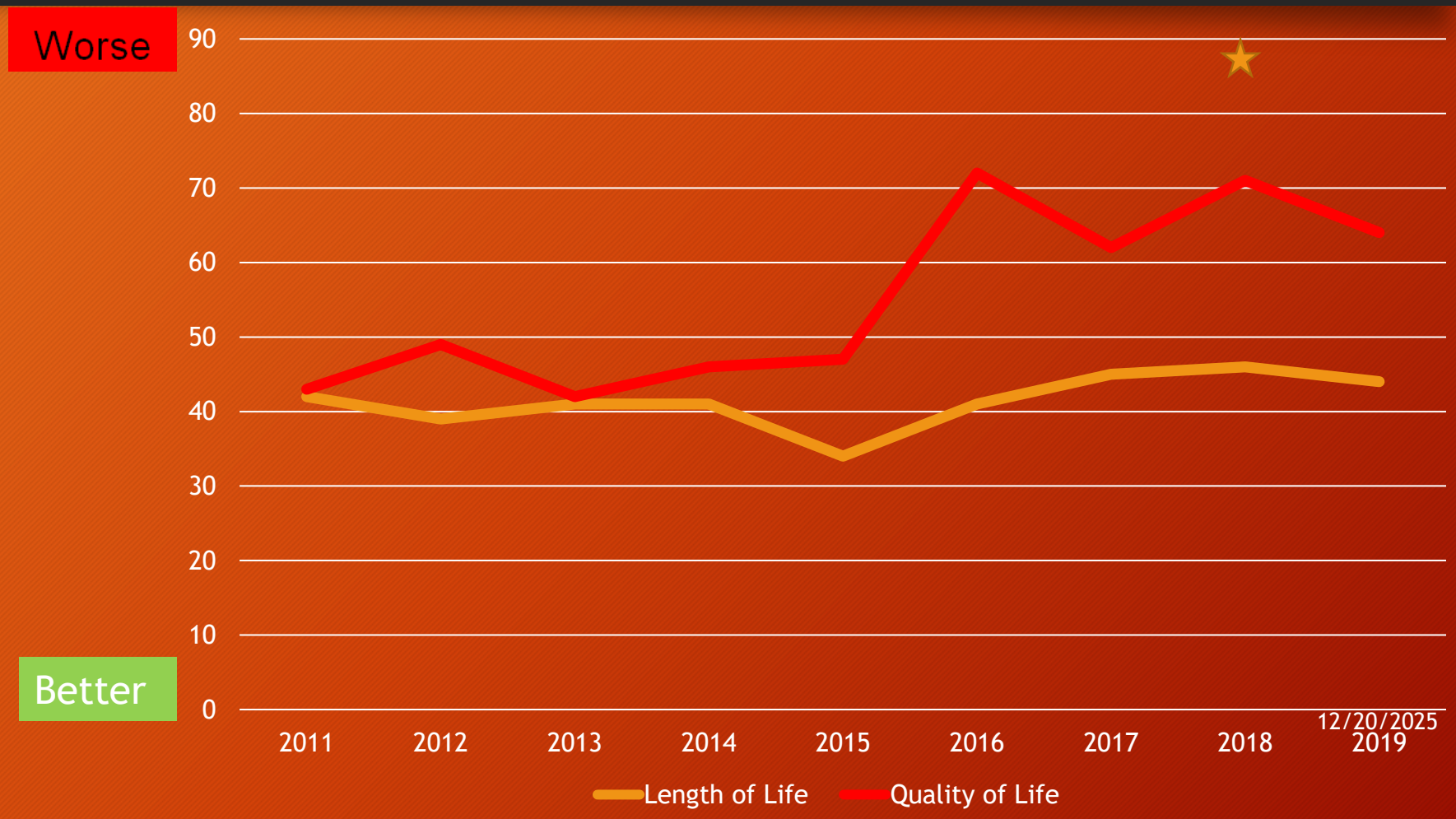
St. Joseph County Overall Rank in Outcomes

3



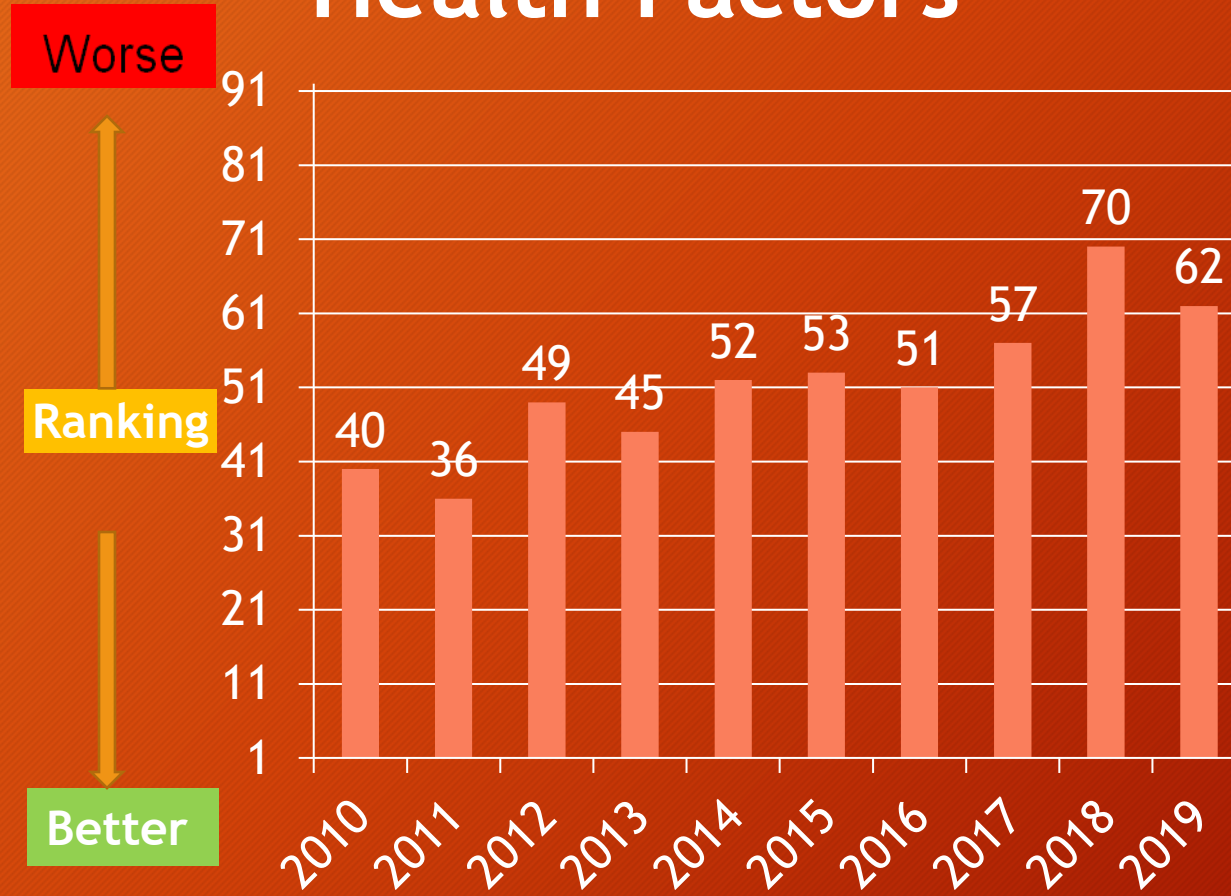
Ranking of Outcome Components: Length of Life and Quality of Life

4



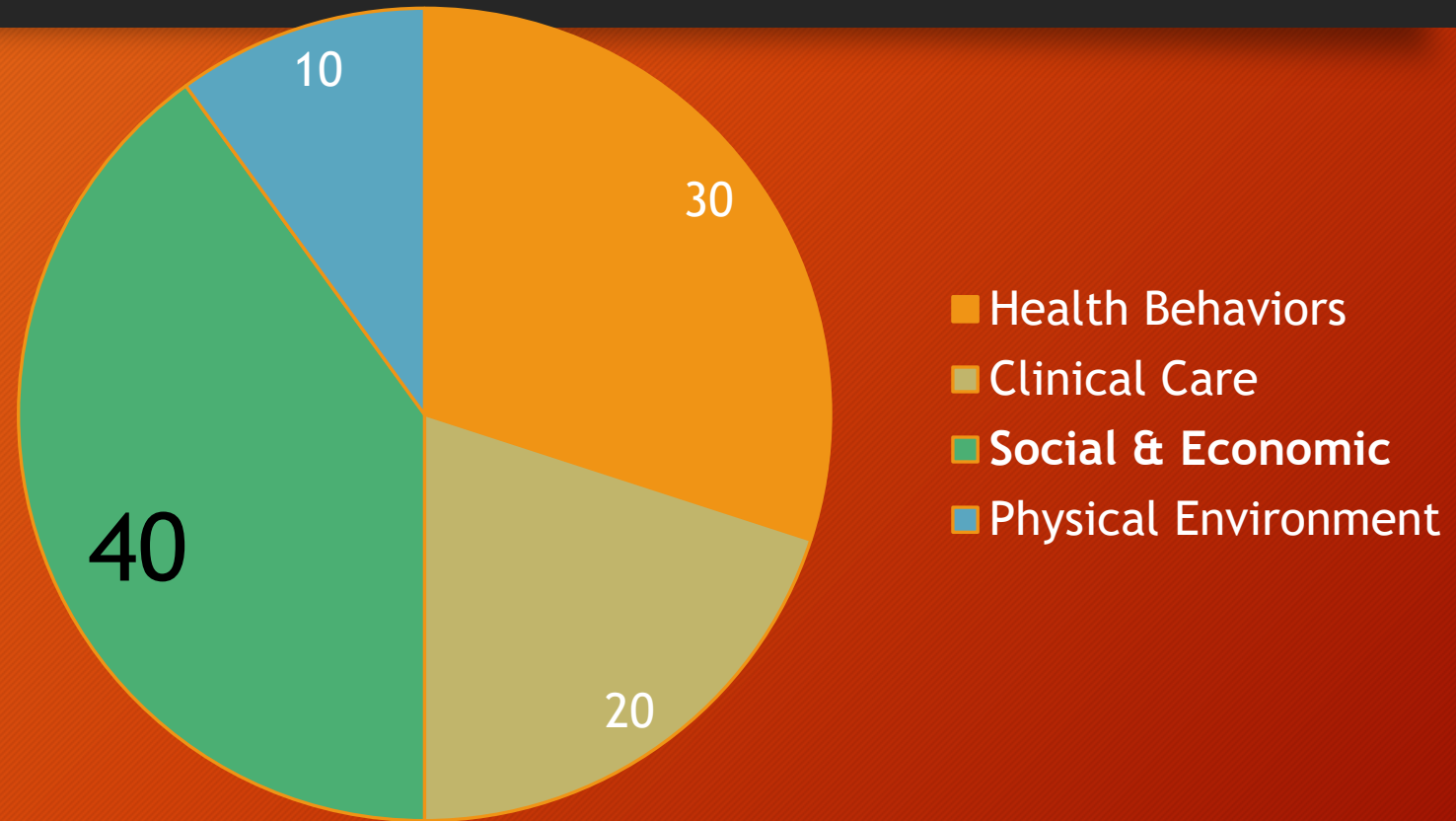
St. Joseph County Overall Rank in Health Factors

5

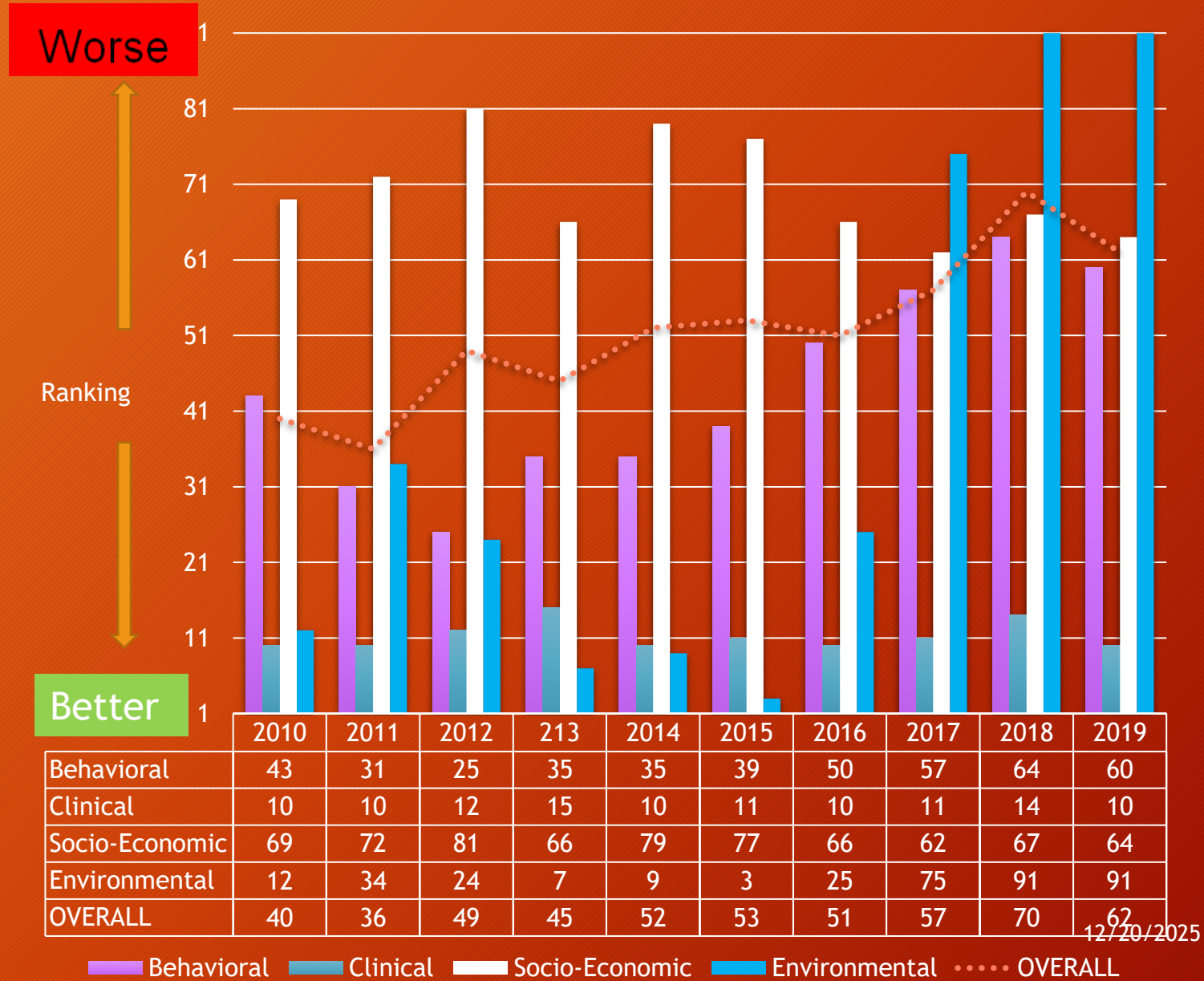


Health Factors: Weighting

6



Health Factors Ranking



7

Behavioral

8

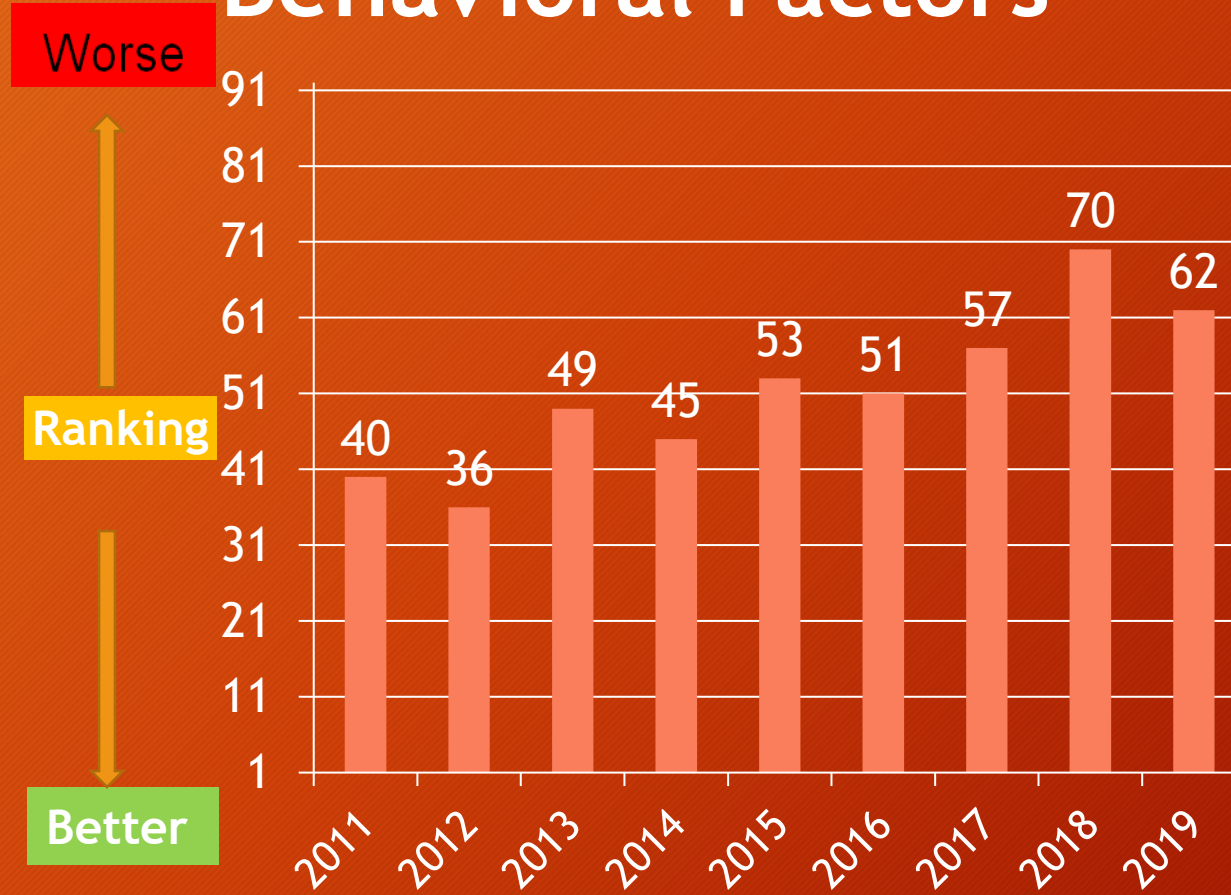
- Smoking
- Eating
 - Obesity
 - Food access
- Drinking (& driving)
 - Excessive drinking
 - Alcohol-impaired driving deaths
- Sexual activity
 - STDs
 - Teen births



12/20/2025

St. Joseph County Overall Rank in Behavioral Factors

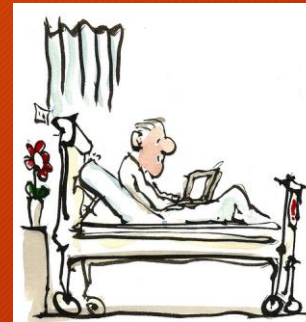
9



Clinical

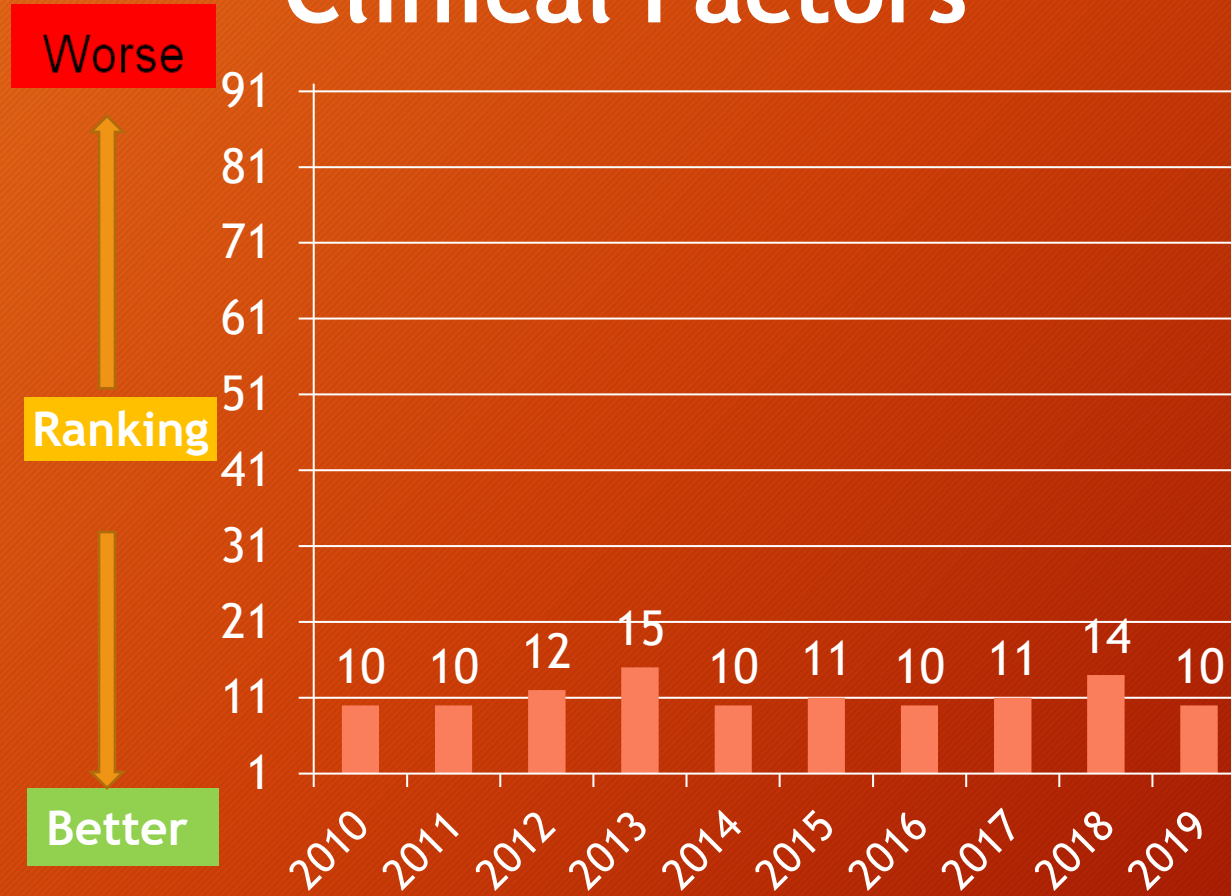
10

- Insurance rates
- Primary care physicians
- Dentists
- Mental health providers
- Preventable hospitalizations
- Diabetic monitoring
- Mammography screening



St. Joseph County Overall Rank in Clinical Factors

11



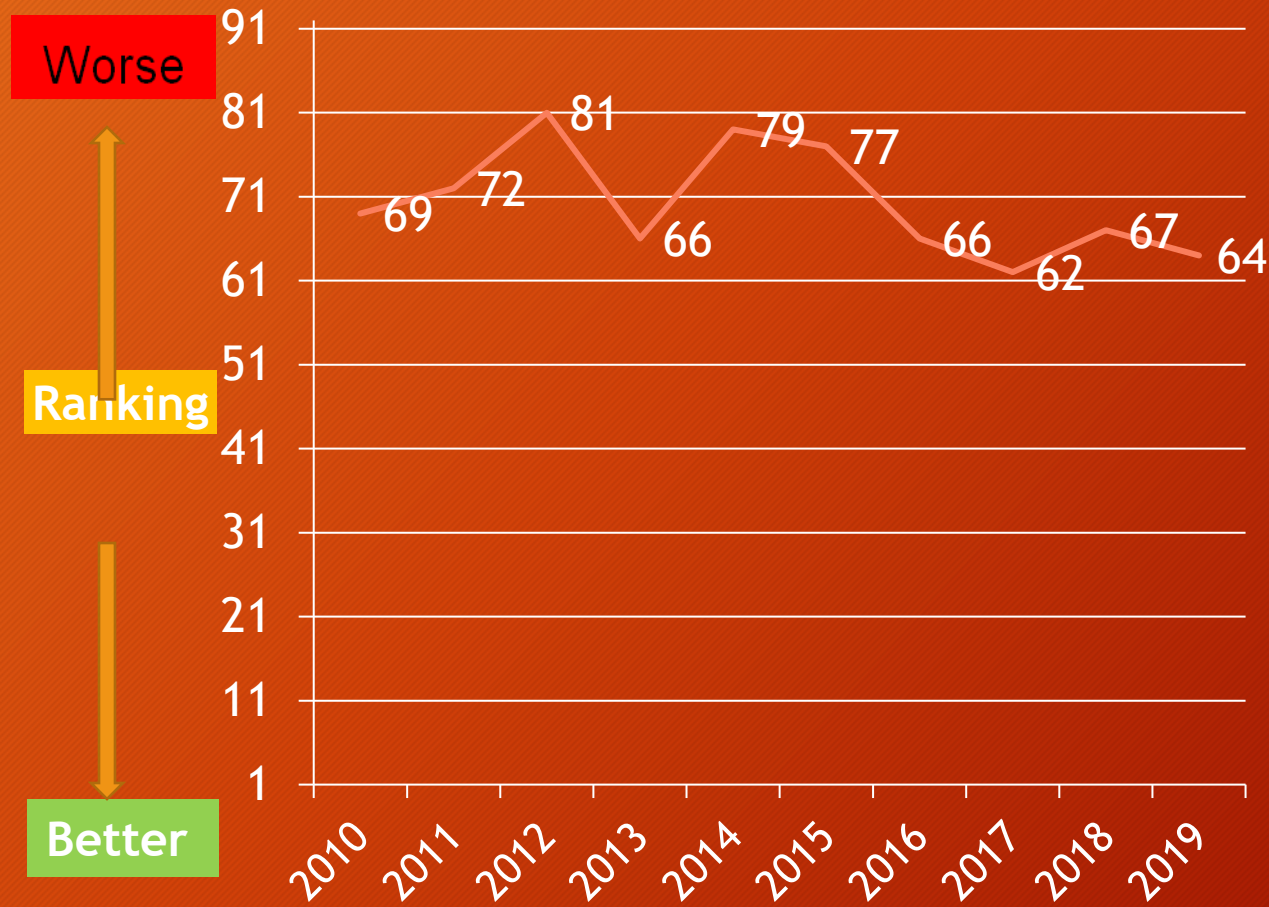
Social-Economic Factors

12

- High school graduation
- Some college
- Unemployment
- Children in poverty
- Income inequality
- Children in single-parent households
- Social associations
- Violent crime
- Injury deaths

St. Joseph County Overall Rank in Socio-economic Factors

13



Physical Environment

14

- Air pollution (particulate matter)
- Drinking water violations
- Severe housing problems
- Driving alone to work
- Long commute - driving alone

Challenges/Concerns

- Adult Smoking
- Adult Obesity
- Excessive Drinking
- Sexually trans. Infections
- Income inequality
- Violent crime
- Air pollution

Strengths

- Access to exercise opportunities
- Primary care physicians
- Mental health providers
- Preventable hospital stays
- Flu vaccinations

Differences in Health Outcome Measures Among Counties and for Racial/Ethnic Groups in Indiana

| Indicator | St Joseph County | Healthiest Co. | Least Healthy | AI/AN | Asian | Black | Hispanic | White |
|-------------------------------|------------------|----------------|---------------|-------|-------|-------|----------|-------|
| Premature Age-Adj. Death Rate | 402 | 388 | 407 | | | 644 | 200 | 385 |
| % Poor or Fair Health | 19 | 10 | 20 | 30% | 10% | 23% | 24% | 16% |
| Poor Physical Health Days | 4 | 4.2 | 3.1 | 6.0 | 1.6 | 4.2 | 3.2 | 3.9 |
| Poor Mental Health Days | 4.6 | 4.7 | 3.4 | 6.0 | 2.9 | 4.5 | 3.0 | 4.4 |
| Low Birthwt | 8% | 8% | 6% | 10% | 8% | 13% | 7% | 7% |



Differences in Health Outcome Measures and Factors for Racial/Ethnic Groups in St. Joseph Co

| Indicator | Overall | Black | Hispanic | White |
|-----------------------|---------|--------|----------|-------|
| Premature Death Rate | 7,900 | 13,300 | 5,300 | 7,300 |
| Low Birthwt | 8% | 13% | 7% | 7% |
| Teen Birth Rate | 29 | 60 | 52 | 20 |
| Diabetes Monitoring | 85% | 81% | | 86% |
| Mammography Screening | 63% | 64% | | 63% |
| Children in poverty | 22% | 51% | 35% | 16% |
| Drive alone to work | 82% | 76% | 75% | 84% |